

Air Distributor Housing, Remove and Install



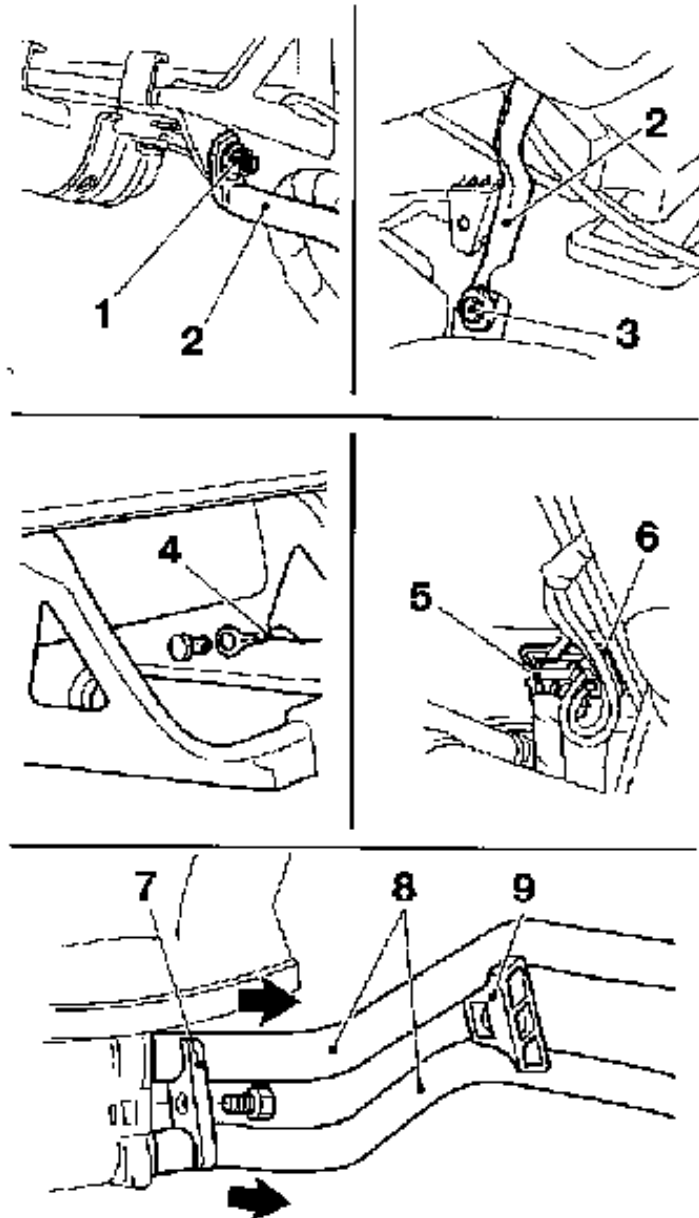
Remove

Open coolant drain bolt on radiator – collect coolant. Remove instrument panel padding – see operation "Instrument Panel Padding, Remove and Install (up to MY 2000)" and "Instrument Panel Padding, Remove and Install (as of MY 2000) in group "C".

For vehicles with air conditioning: Drain air conditioning – see operation "Air Conditioning, Drain". Detach refrigerant line from bulkhead.

All vehicles: remove driver's side air duct. Unbolt right steering column strut (2) from steering column (1) and underbody (3). Unbolt ground cable (4) from bulkhead and expose wiring harness. Release and disconnect wiring harness plug (5) from fan motor series resistor (6) Unbolt retainer plate (7), release bracket (9) and press heater core pipes (8) forwards into engine compartment.

Collect residual coolant escaping from heater core.



E 9364

For vehicles with air conditioning: Disconnect black vacuum hose (2) from coolant cutoff valve. Release and disconnect wiring harness plug (3) from solenoid valve coolant cutoff valve.

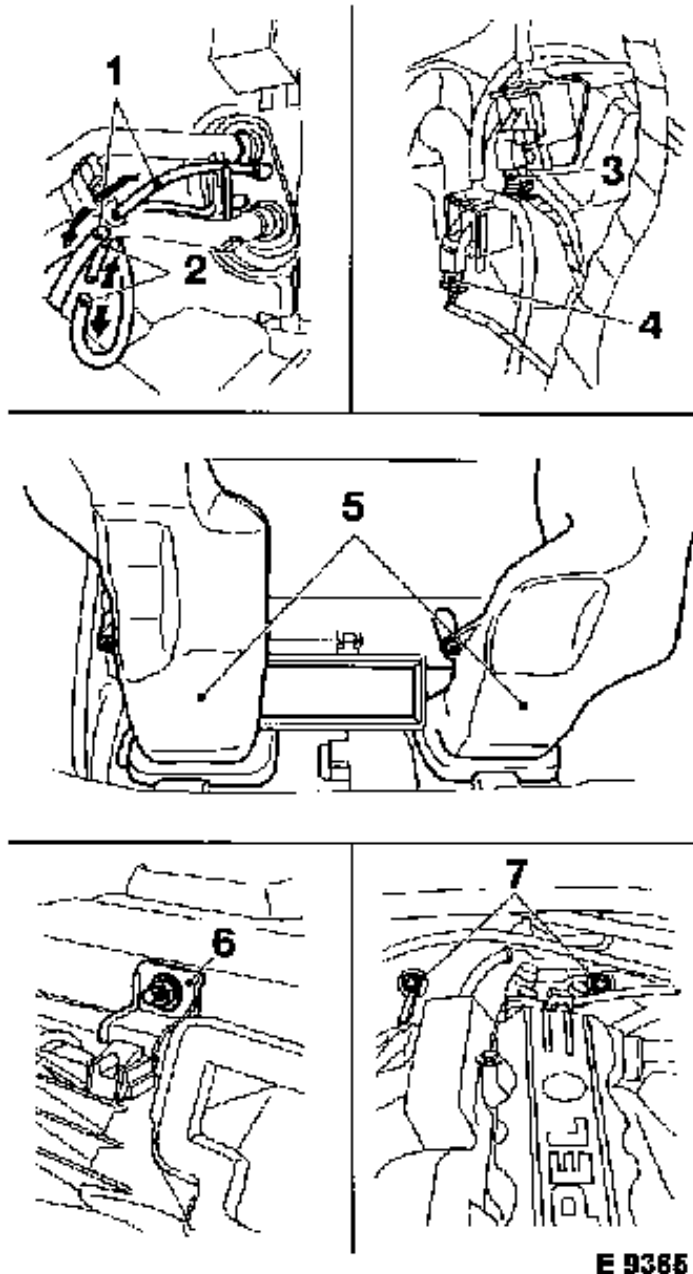
All vehicles: Detach yellow vacuum hose (1) from controls – not for vehicles with Electronic Climate Control (ECC). Release and disconnect wiring harness plug (4) from

solenoid valve air recirculation valve.

Unbolt rear footwell air ducts (5). Detach blue vacuum hose from recirculating air valve vacuum unit.

For AT: separate cable ties on recirculating air valve solenoid valve. Lay AT Bowden cable aside.

Unbolt nut from bracket (6). Unbolt 2 bolts on engine compartment side (7) from air distributor housing. First pull air distributor housing upwards towards rear and then remove over body wiring harness.



E 9385



Install

Insert air distributor housing. Screw in 2 bolts on engine compartment side into air distributor housing (1) 4 - 4.5 Nm / 3 - 3.5 lbf. ft. Bolt bracket to bulkhead (2) 4 - 4.5 Nm / 3 - 3.5 lbf. ft. Bolt on rear footwell air ducts (3).

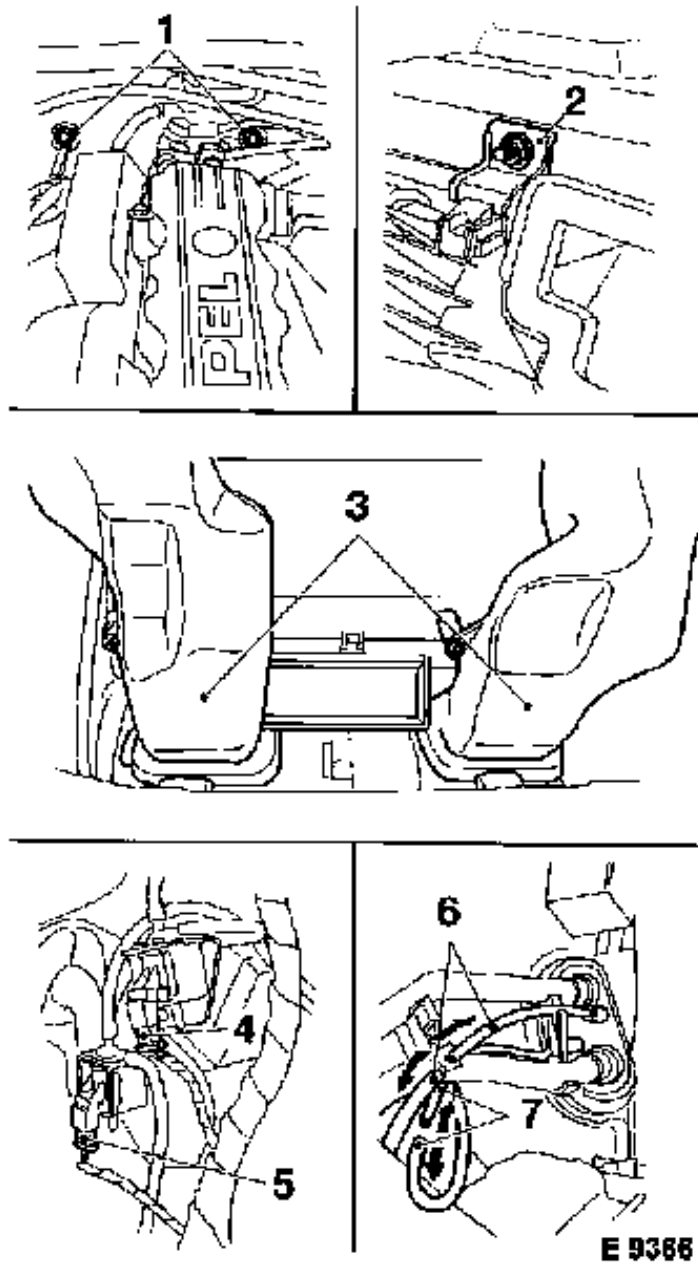
Push blue vacuum hose onto recirculating air valve vacuum unit and press into bracket.

Attach wiring harness plug (5) to solenoid valve air recirculation valve. Attach yellow

vacuum hose (6) to controls – not for vehicles with Electronic Climate Control (ECC).

For vehicles with air conditioning:

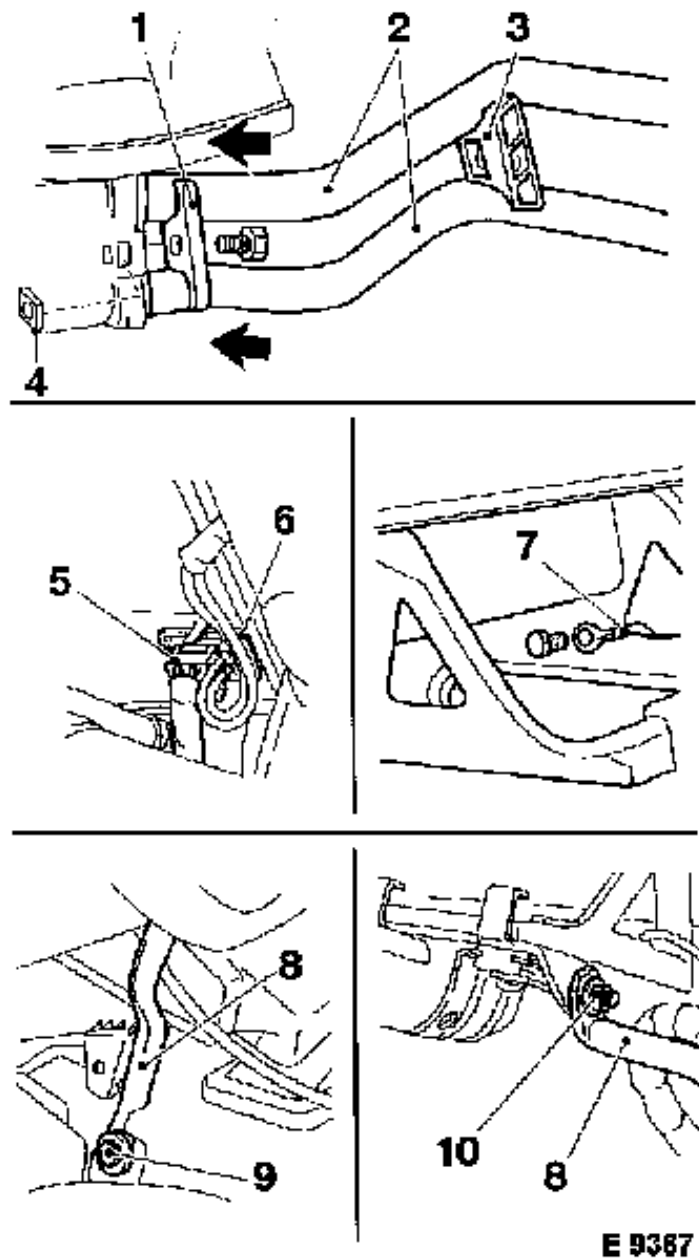
Attach black vacuum hose (7) to coolant cutoff valve. Attach wiring harness plug (4) to solenoid valve coolant cutoff valve.



Insert heater core pipes (2) with new O-rings in heater core. Insert nut (4) into heater core.

Retainer plate (1) to heater core – tightening torque 4.5 – 6.5 Nm / 3.5 – 5 lbf. ft. Bolt bracket (3) for pipes to air distributor housing. Bolt ground cable (7) to bulkhead.

Insert strut (8) for steering column and fasten, nut to steering column (10) – tightening torque 22 Nm / 16 lbf. ft., bolt to vehicle underbody (9) – tightening torque 22 Nm / 16 lbf. ft.



Connect wiring harness plug (5) to fan motor series resistor (6). Insert driver's side air duct.

For vehicles with air conditioning: bolt refrigerant line to bulkhead with new O-rings, 20 Nm / 15 lbf. ft. Evacuate and charge air conditioning – see operation "Air Conditioning, Evacuate and Charge".

All vehicles: Install instrument panel padding. Top up cooling system – see operations "Cooling System, Top Up and Bleed" and "Cooling System, Check for Leaks" in group "J".

